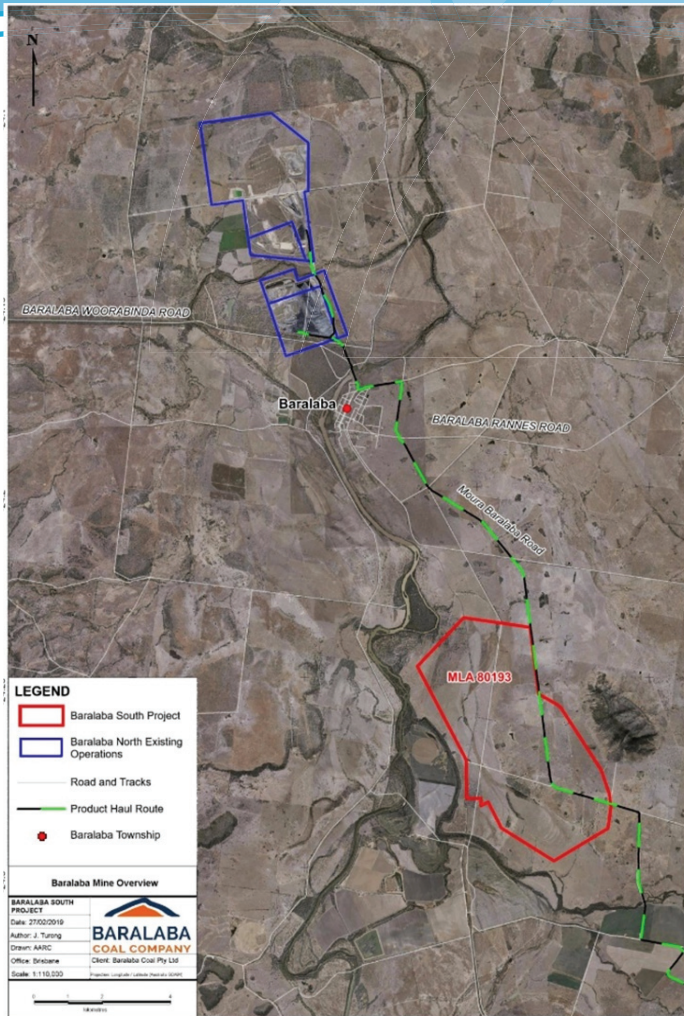


# BARALABA SOUTH PROJECT



## APPROVAL IS BEING SOUGHT FOR THE BARALABA SOUTH PROJECT (THE PROJECT)

Located approximately 8km south of the township of Baralaba and 115km west of Rockhampton, in the lower Bowen Basin region of Central Queensland.

The project proposes to develop an open-cut coal mine using traditional truck and excavator methods. Mining will peak at up to 5 million tonnes per annum (Mtpa) of run-of-mine coal. A mine life of up to 40 years is proposed within an area of approximately 2,214 hectares covered by Mining Lease Application (MLA) 80193.

Product coal will be hauled approximately 40km by public road using covered road trains to the company's existing Train Load-out (TLO) facility located 2km east of Moura. A diversion of the Baralaba – Theodore Road is proposed to the east of the ML to enable the mining activity.

The Project is expected to provide employment for 275 construction employees and approximately 400 operational employees.

## ONSITE INFRASTRUCTURE

- Site access road from Theodore Baralaba Road
- Communications infrastructure
- Water infrastructure
- High voltage transmission lines/poles and reticulation
- Light vehicle access roads
- Flood levees
- Mine infrastructure areas
- Equipment laydown areas
- Sewage treatment facilities
- Heavy vehicle haul roads
- Coal handling preparation plant (CHPP)
- Sediment dams
- Coal stockpiling and blending facilities
- Ablutions and crib room facilities
- Offices and administration facilities
- All other ancillary activities necessary to support the project

## OFFSITE INFRASTRUCTURE

### Road infrastructure realignment

The project is located over part of the Theodore-Baralaba Road, a local council road that also forms part of the Baralaba North Mine haul route. A section of approximately 6km of this road will be realigned to the east of MLA 80193 to accommodate the project.

### Rail infrastructure

Train loading and rail transport of product coal from the project will be done from the company's existing TLO facility.

### Haulage infrastructure

Haulage of product coal to the company's TLO is proposed along the existing Baralaba Coal Mine haul route.

### Accommodation

The proponent owns and operates an accommodation camp at the Baralaba Caravan Park, approximately 8 km north of the project. There is opportunity to expand the accommodation further as required.

## TIMELINE



## APPROVALS PROCESS

The key component of the approvals process for the Project is an Environmental Impact Statement (EIS) under the Queensland Environmental Protection Act 1994 (EP Act). The purpose of the EIS is to describe the existing environmental values of the Project area, the potential impacts of the Project and the ways of avoiding, mitigating or offsetting impacts. The EIS will be lodged for assessment by the Queensland Department of Environment and Science (DES).

As part of the EIS process, Baralaba is conducting a social impact assessment addressing five core matters:

- Community and stakeholder engagement
- Workforce management
- Housing and accommodation
- Local business and industry procurement; and
- Health and community well-being.

### What is social impact assessment

Social Impact Assessment (SIA) is the processes of identification, analysing, assessment, management and monitoring of the intended and unintended social consequences, both positive and negative, of projects. It is best understood as an overarching framework that embodies the evaluation of all impacts on humans and on the ways in which people and communities interact with their socio-cultural, economic and biophysical surroundings.

SOCIAL IMPACT	DESCRIPTION
Way of life	How people live, work, play, and interact with one another on a day-to-day basis.
Culture	People's shared beliefs, customs, values, and language or dialect (including Aboriginal culture and connection to country).
Community	Its cohesion, stability, character, services, and facilities.
Political systems	The extent to which people are able to participate in decisions that affect their lives, and the resources provided for this purpose.
Environment	The quality of the air and water people use; the availability and quality of the food they eat; the level of hazard or risk, dust and noise they are exposed to; the adequacy of sanitation; their physical safety; and their access to and control over resources.
Health and wellbeing	People's physical, mental, social and spiritual wellbeing.
Personal and property rights	Particularly whether people are economically affected, or experience personal disadvantage which may include a violation of their civil liberties.
People's fears and aspirations	Their perceptions about their safety, their fears about the future of their community, and their aspirations for their future and the future of their children.

# BARALABA SOUTH PROJECT

## FINDINGS FROM TECHNICAL STUDIES

### Transport and Traffic

- The Project is not deemed to significantly impact the level of service of roads within the study area.
- Low baseline traffic volumes result in a high level of service across the study network, which will continue to the end of life of the Project.
- Intersections within the study area will all operate well within industry standard performance thresholds to the end of life of the Project.
- The haul route would operate acceptably with the increased traffic associated with the Project.
- Baralaba South Project is not anticipated to have a significant impact on the safety and efficiency of the road network.

### Flora and Fauna

- Technical studies have been conducted for the potential impacts on the plants and animals within the study area, including aquatic (water), terrestrial (land), and mixed ecology areas.
- Unlikely the Project will result in a significant impact on Matters of National Environmental Significance. However, clearing of vegetation may impact: Coolibah – Black Box Woodlands Threatened Ecological Community; Xerothamnella herbacea; and the Ornamental Snake.
- No potential nesting habitat or preferred habitat for the Fitzroy turtle or the white-throated snapping turtle was discerned, although they may be present in the wider region.
- Several Matters of State Environmental Significance have the potential to be impacted:
  - regulated vegetation, including communities that are classed as endangered, of concern or wetlands, will be addressed through the provision of an environmental offset where significant impacts cannot be avoided; and
- Mitigation proposed through avoidance and control mechanisms first, with environmental offsets provided for residual impacts.

### Hazards and Safety

- Increased risk of motor vehicle incidents and increased heavy vehicle movements.
  - Proposed management will be through fatigue management/fitness for work, alcohol and drug testing, road safety awareness training.
- The highest potential identified risks include increased dust impacts to residential and ecological areas, other impacts to local and regional air quality through greenhouse gas emissions, and loss of existing/alternative and future land uses in and around the project area. Proposed mitigation measures such as long-term monitoring, receptor controls, chemical treatment, reactive dust controls were identified for the provision of adequate control over these higher-class risks.
- OHS consequences – OHS performance will be closely monitored and assessed.

### Visual Amenity

- Impacts through changed landforms and prominent plant and equipment. Management through progressive revegetation of landforms and buffers. Revegetated bunds will be established early in the mine life shield plant and equipment and improve visual amenity.

### Groundwater

- Impacts to groundwater resource through aquifer disturbance and the presence of water contaminants. Proposed management through effective storage and handling; containment or interception of contaminated source, spill controls.
- Modelled drawdown indicates that impacts are largely contained to < 1km from mining. Impacts to Groundwater Dependant Ecosystems are unlikely (including stygofauna and riparian vegetation).
- Impacts to landholder production bores will be minimal if any. Any impacts to water supply will be assessed and managed in consultation with affected landholders.

### Noise and Vibration

- Industry standard criteria will be complied with.
- Noise emissions from plant, equipment and processes, and road haulage. Proposed management through noise attenuation bunds, equipment sound attenuation, long term monitoring and receptor controls.

### Air Quality

- Industry standard criteria will be complied with.
- Dust impacts and emissions from equipment, processes and vehicle movements on unsealed roads, and increased bare ground. Proposed management through watering of haul roads, rescheduling of blasting operations, covered road trains for product transport, and other measures as required.

### Surface Water

- Preliminary findings only available at this stage.
- Potential impacts to local/ regional surface water quality. Management through containment of contaminated run-offs (mine affected water, chemical wastes), Erosion and Sediment Control Management Plan.
- Release to waters will be in accordance with industry standard release criteria only.
- Impacts on surface water resources/ water licences. Proposed management through water efficiency programs, recycling and a Water Management Plan.
- Change to the existing (pre-mining) flood scenarios for residences and arable land surrounding the Project. Significant impacts are likely to be limited to land immediately adjacent to the Project and where required will be addressed directly with affected landowners.

## Land

- Pre-mining land use of cattle grazing exists within the MLA. Cropping land is located around the Project, particularly associated with low lying land adjacent to the River. Areas of Strategic Cropping Land trigger area are mapped on and around the Project.
- Significant impacts to land are likely to be limited to direct clearing and potential for spills and contamination within the Mining Lease and associated infrastructure. The potential for impacts of the Project outside of the ML (e.g. flooding and dust) will be assessed in the EIS and appropriately managed.
- Land impacts will be managed by proper bunding of contaminants (in accordance with Australian Standards) and controls on clearing such as Permits to Disturb. In addition, topsoil will be stripped and stockpiled for use in land rehabilitation.

## Future Land Use

- Impacts through the loss of existing / alternative land uses from the Project area.
- Impacts through restrictions on possible future land uses in and around the Project area. Proposed management through rehabilitation practices and land use assessments.
- Project aims to achieve a post mining land use for all areas of rehabilitation. Primarily return land to grazing land use with potential for fauna habitat as a post mining land use in some areas of steep slope.
- Community input into post mining land uses will be sought.

## Cultural Heritage

- The 2012 survey identified 15 Non-Indigenous cultural heritage sites and places within the project area, consisting primarily of dams, telephone lines, turkey nests, and homestead complexes. All identified sites and places in the study will be (or potentially will be) removed by the Baralaba South Project. There is the possibility of the existence of sites unidentified by this study in the project area, but their potential to exist is low.
- A Cultural Heritage Management Plan has been developed in consultation with the Gaangalu Nation People.

## STATUS OF OTHER TECHNICAL ASSESSMENT

The following technical assessments are in progress and findings will be reported in the EIS:

- Economics;
- Geotechnical and geochemical;
- Indigenous cultural heritage;
- Rehabilitation; and
- Soil.

# HAVE YOUR SAY

There are several ways you can receive information and participate in the SIA process:

- **project website (details below);**
- **Information sheets;**
- **face-to-face or telephone interviews;**
- **community and stakeholder workshops;**
- **on-line survey; and**
- **written submission during public notification of the EIS.**

We value your comments and perspectives and encourage you to complete our online survey

<https://www.surveymonkey.com/r/BCSIA2019>

## CONTACT US

For information about the SIA:

Damian Vanderwolf

Phone: 07 3648 1200

Email: [sia@emmconsulting.com.au](mailto:sia@emmconsulting.com.au)

For information about the Baralaba South Project:

Phone: 07 3088 4670

Email: [baralabasouth@baralabacoal.com.au](mailto:baralabasouth@baralabacoal.com.au)

[www.baralabacoal.com.au/projects/baralaba-south-project](http://www.baralabacoal.com.au/projects/baralaba-south-project)